

** Toshiba PDA (PocketPC 2002) with CF WiFi card **

1. Insert the CF 802.11b/g wireless card* into your Toshiba PDA, and install the drivers for the card. If your Toshiba PDA has a built-in wireless card, make sure the software is installed and the card functions as required. Here we take a Belkin CF 802.11b wireless card as an example.

2. Launch the Belkin CF card Utility

There are several ways to do this, e.g.:

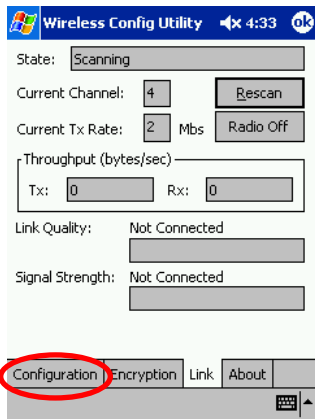
i) Click the **Belkin CF card icon** in the **System Tray**.



ii) Or from the **Start menu**, select **Belkin CF utility**.

3. Set up an Azure Wireless profile (or select the existing one) to join the Azure network

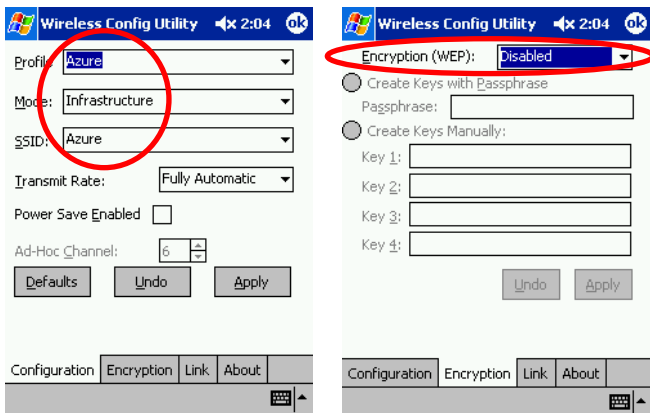
• Click the **Configuration** tab at the bottom left hand side to access the profile list.



• Create a new profile and set its name to **Azure** and change the access mode to **Infrastructure**. Change **SSID** to **Azure** and leave **Transmit Rate** as **Fully Automatic**.

• In **Encryption** tab, **Disable Encryption (WEP)**.

• Click **ok** on the top right hand corner of the screen to save and activate the profile.



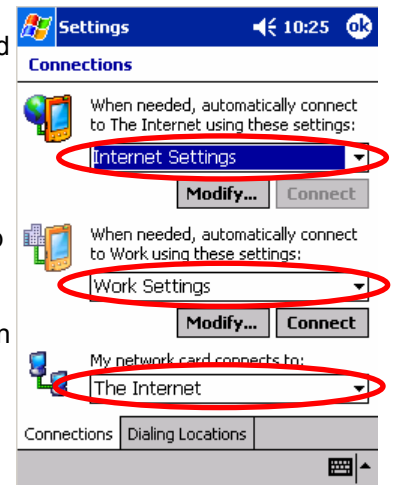
4. Modify the Connections Settings

From the **Start** menu, select **Settings**, click the **Connections** tab, then click the **Connections** icon.

- Choose **Internet Settings** from the first drop-down box.
- Choose **Work Settings** from the second drop-down box.
- Choose **The Internet** from the third drop-down box.

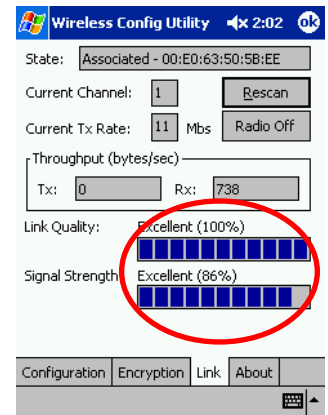
NOTE: If you have previously modified the **Internet Settings** or **Work Settings** then you will need to change them back to their factory defaults.

• Click **ok** at top right hand corner of the screen to save and activate the settings. **You may need to reset your PDA to complete the process.** When the PDA powers up again, check the connection settings to make sure they have been applied correctly.



5. Confirm connection and signal strength

Load the Belkin CF card utility again and the utility window will appear. The stacked bars show the **Link Quality**.



6. Open your web browser

Open any valid web page, and within a few seconds the Azure network will send you a login screen. Follow the onscreen login process to select your preferred billing option (through your ISP, via credit card, or by using a pre-paid card) and complete the login process.

7. Once you have finished the login process, you can browse the Internet, use your email, or launch a Virtual Private Network (or other secure encrypted connection) to your corporate network. **To logoff**, disconnect any VPNs and then click the Logout button.

For further technical assistance, call your Internet Service Provider (ISP) if they are an Azure Partner, or call Azure Wireless Technical Support on 1300 55 22 15

* These cards are the standard wireless cards used in most home/office wireless LAN's. Wireless cards can be purchased from any computer retailer/vendor.