

** NetComm Wireless Cards **

1. Insert the wireless 802.11b card* into your laptop, install the software provided by the manufacturer (if this is your first time using the card). **If you are using a built-in wireless card,** make sure the software is already installed by referring to your user manual to verify the card functions as required.

2. Launch the NetComm Wireless LAN Card Utility

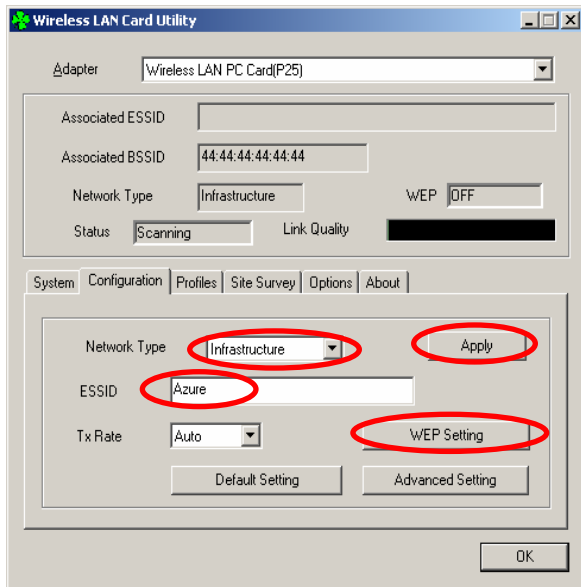
There are several ways to do this e.g.

i) Double click the **Wireless LAN Card Utility** icon in the **System Tray**



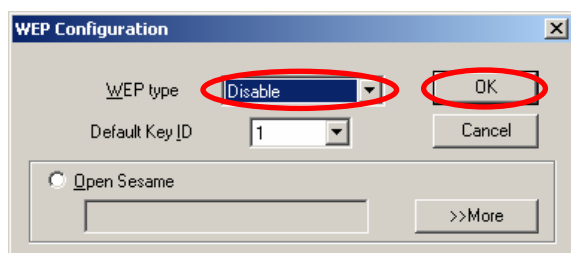
ii) From the **Start** menu, select **Programs**, then select **Wireless LAN Card Utility**, and select **Config Utility**

The window below will open.



3. Set up an Azure Profile (or select the pre-existing Azure profile) to join the Azure network

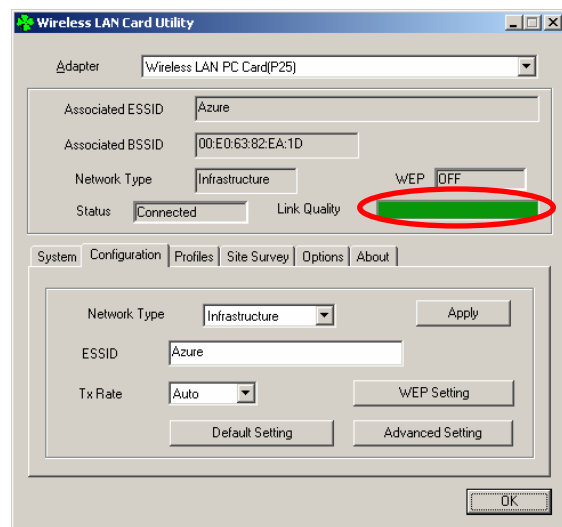
- Type in **Azure** as the **ESSID**, select **Infrastructure** in the **Network Type** drop down menu, and click **Apply**.
- Click the **WEP Setting** button and the window below will open. Ensure **Disable** is selected from the **WEP type** drop down menu. Click **OK** to complete the process.



• You can also set up an **Azure** profile by clicking the **Profile** tab in the **Wireless LAN Card Utility**. Fill in the required information the same way as the previous steps, such as **ESSID**, **Network Type**, and **WEP Setting**. This allows you to quickly swap between different profiles to connect to different networks.

4. Confirm connection and signal strength

After the successful configuration, the utility window will appear like the one below. The coloured bar shows the **Link Quality**, if this does not indicate a connection, repeat the login steps and try again



The **Wireless LAN Card Utility** icon in the **System Tray** will also change the color from yellow to green to indicate the successful establishment of the network connection.



5. Open your web browser

Open any valid web page, and within a few seconds the Azure network will send you a login screen. Follow the onscreen login process to select your preferred billing option (through your ISP, via credit card, or by using a pre-paid card) and complete the login process.

6. Once you have finished the login process, you can browse the Internet, use your email, or launch a Virtual Private Network (or other secure encrypted connection) to your corporate network. To logoff, disconnect any VPNs and then click the Logout button.

For further technical assistance, call your Internet Service Provider (ISP) if they are an Azure Partner, or call Azure Wireless Technical Support on 1300 55 22 15

* These cards are the standard wireless cards used in most home/office wireless LAN's. Wireless cards can be purchased from any computer retailer/vendor.