

** Intel® PRO Wireless Cards **

1. Insert the wireless 802.11b card* into your laptop, install the software provided by the manufacturer (if this is your first time using the card). **If you are using a built-in wireless card,** make sure the software is already installed by referring to your user manual to verify the card functions as required.

2. Launch the Intel® PRO/Wireless Card Client Utility

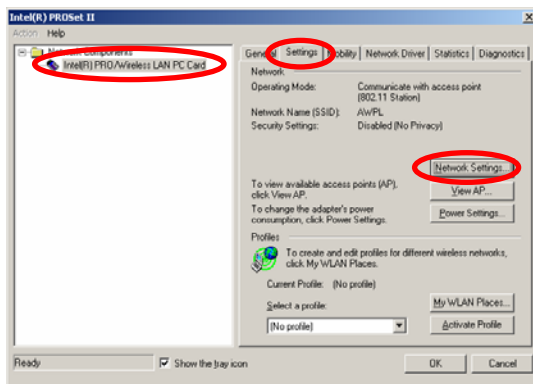
There are several ways to do this e.g.

i) Double click the **Intel® PRO** icon in **System Tray**.



ii) From the **Start** menu, select **Settings**, then **Control Panel**, and double click the **Intel® PRO** icon.

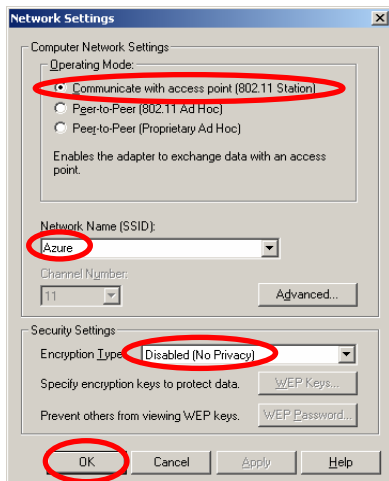
The window below will open. Click **Intel® PRO/Wireless LAN PC Card**, and click the **Settings** tab.



3. Configure the network settings to join the Azure network and create an Azure Profile for easy access

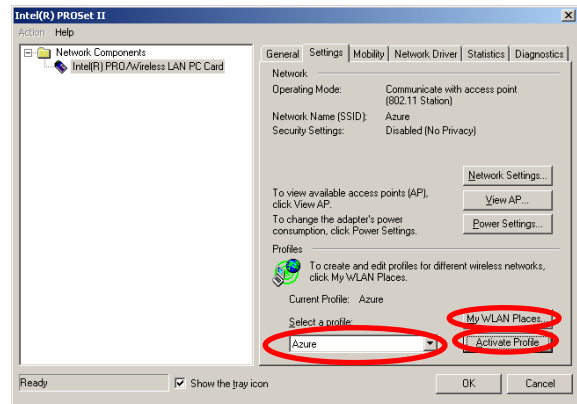
• Click **Network Settings**, the window below will open.

• Select **Communicate with access point**, set **Network Name SSID** to 'Azure', and set the **Encryption** to **Disabled** (this does not prevent a secure network connection once connected to the Internet) . Click **OK**.



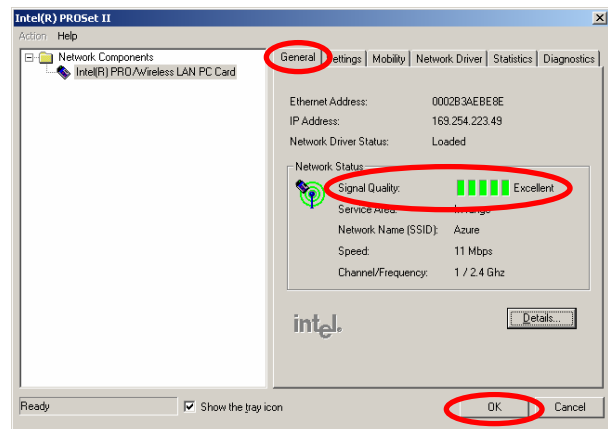
• If you are a regular user, you can create an Azure Profile by following the Wizard accessed by clicking **My WLAN Places**, double clicking the **Intel® PRO/Wireless Card**, then double clicking the **Add New WLAN Profile**.

• To open a profile, select it from the drop down menu and then **Activate Profile**.



4. Confirm connection and signal strength

In the **Intel® PRO** window, click **General** tab and the screen will show the signal quality. If this does not indicate a connection, repeat the setup steps. Click **OK** to proceed.



5. Open your web browser

Open any valid web page, and within a few seconds the Azure network will send you a login screen. Follow the onscreen login process to select your preferred billing option (through your ISP, via credit card, or by using a pre-paid card) and complete the login process.

6. Once you have finished the login process, you can browse the Internet, use your email, or launch a Virtual Private Network (or other secure encrypted connection) to your corporate network. **To logoff**, disconnect any VPNs and then click the Logout button.

For further technical assistance, call your Internet Service Provider (ISP) if they are an Azure Partner, or call Azure Wireless Technical Support on 1300 55 22 15

* These cards are the standard wireless cards used in most home/office wireless LAN's. Wireless cards can be purchased from any computer retailer/vendor.