

** Enterasys / RoamAbout / Proxim / Lucent / ORiNOCO Wireless Cards **

1. Insert the wireless 802.11b card* into your laptop, install the software provided by the manufacturer (if this is your first time using the card). **If you are using a built-in wireless card,** make sure the software is already installed by referring to your user manual to verify the card functions as required.

2. Launch the Client Utility (RoamAbout version shown)

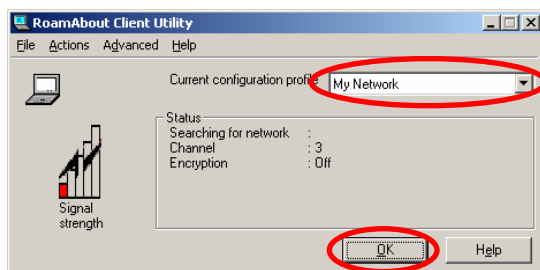
There are several ways to do this e.g.

i) Double click the **RoamAbout / ORiNOCO** icon in the **System Tray** (RoamAbout icon shown below)



ii) From the **Start** menu, select **Programs**, select **RoamAbout / ORiNOCO** and then **Client utility**.

The window shown below will open.

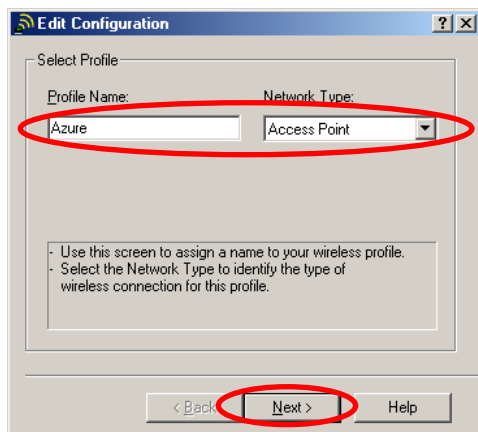


3. Set up an Azure Profile (or select the pre-existing Azure profile) to join the Azure network

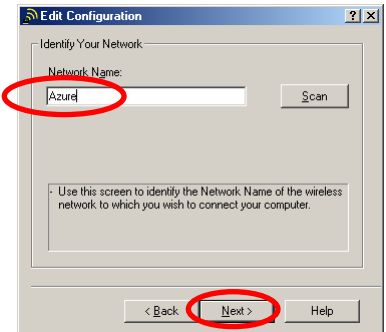
• If an Azure profile has already been setup, select it from the drop down menu highlighted on the window above, click **OK** and then proceed to **step 4**.

• To set up a new Azure profile, select **Actions** from the **Menu** bar and then select **Add/Edit Configuration Profile**. Then click **Add** in the window that appears.

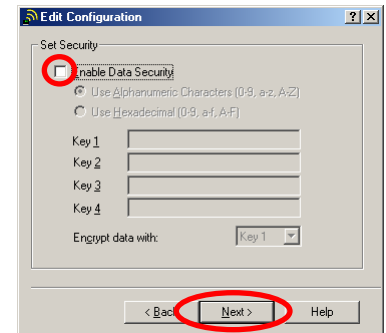
• The window below will appear. Name the profile '**Azure**', and select **Access Point** from the drop down box. Then click the **Next** button.



• The following window will appear. Type in '**Azure**' as the network name, and then click the **Next** button.



• Ensure that the **Enable Data Security** box is **NOT** ticked (this does not prevent you establishing a secure network connection once connected to the Internet) and click **Next**.

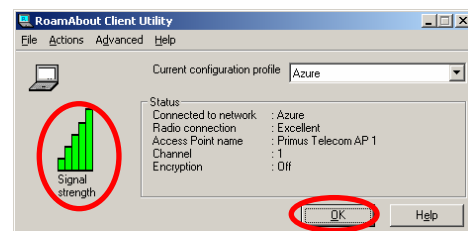


• In the **Power Management** window, select the desired behaviour and click the **Next** button.

• In the **TCP/IP Behaviour** window, tick the renew option and click the **Finish** button. Then click **OK**.

4. Confirm connection and signal strength

If signal indicator is green (or yellow for a weaker signal) click **OK**, otherwise repeat the setup steps and try again.



5. Open your web browser

Open any valid web page, and within a few seconds the Azure network will send you a login screen. Follow the onscreen login process to select your preferred billing option (through your ISP, via credit card, or by using a pre-paid card) and complete the login process.

6. Once you have finished the login process, you can browse the Internet, use your email, or launch a Virtual Private Network (or other secure encrypted connection) to your corporate network. To logoff, disconnect any VPNs and then click the Logout button.

For further technical assistance, call your Internet Service Provider (ISP) if they are an Azure Partner, or call Azure Wireless Technical Support on 1300 55 22 15

* These cards are the standard wireless cards used in most home/office wireless LAN's. Wireless cards can be purchased from any computer retailer/vendor.