

** D-Link / NETGEAR Wireless Cards **

1. Insert the wireless 802.11b card* into your laptop, install the software provided by the manufacturer (if this is your first time using the card). **If you are using a built-in wireless card,** make sure the software is already installed by referring to your user manual to verify the card functions as required.

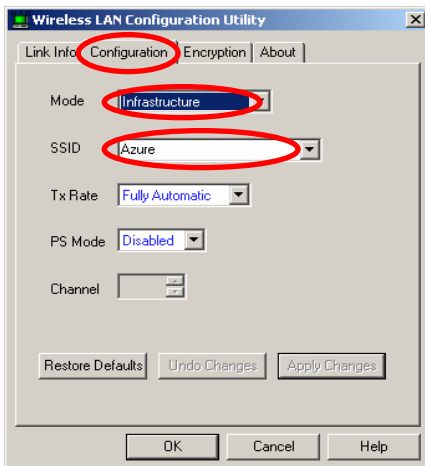
2. Launch the D-Link / NETGEAR Client Utility

There are several ways to do this e.g.

i) Click the **D-Link / NetGear** icon in the **System Tray**

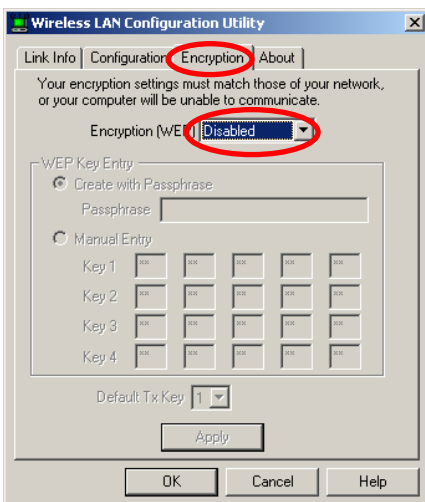


ii) From the **Start** menu, select **Programs**, select **D-Link Control Utility / NETGEAR Adapter**, and then select **Configuration Utility**. Click the **Configuration** tab and the window below will open.



3. Configure the settings to join the Azure network

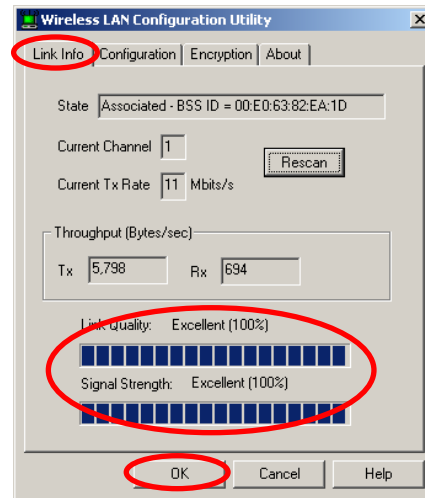
- Set the Mode to **Infrastructure**.
- Enter '**Azure**' as the **SSID**, or select **Azure** from the drop down menu box if you have previously set up this profile
- Click the **Encryption** tab at the top of the window and the window below will be displayed.



- Set the **Encryption** to **Disabled** from the drop down menu (note that this does not prevent you establishing a secure network connection once connected to the Internet) and click the **Link Info** tab.

4. Confirm connection and signal strength

If the signal indicator shows a connection click **OK**, otherwise repeat the login steps and try again.



The **D-Link / NETGEAR Client Utility** icon in the **System Tray** will also change the color from red to green to indicate the connection has been established.



5. Open your web browser

Open any valid web page, and within a few seconds the Azure network will send you a login screen. Follow the onscreen login process to select your preferred billing option (through your ISP, via credit card, or by using a pre-paid card) and complete the login process.

6. Once you have finished the login process, you can browse the Internet, use your email, or launch a Virtual Private Network (or other secure encrypted connection) to your corporate network. **To logoff**, disconnect any VPNs and then click the Logout button.

For further technical assistance, call your Internet Service Provider (ISP) if they are an Azure Partner, or call Azure Wireless Technical Support on 1300 55 22 15

* These cards are the standard wireless cards used in most home/office wireless LAN's. Wireless cards can be purchased from any computer retailer/vendor.