

** Cisco Aironet Wireless LAN Cards **

1. Insert the wireless 802.11b card* into your laptop, install the software provided by the manufacturer (if this is your first time using the card). If you are using a built-in wireless card, make sure the software is already installed by referring to your user manual to verify the card functions as required.

2. Launch the Cisco Aironet Client Utility

There are several ways to do this e.g.

i) From the **Start** menu, select **Programs**, then select **Cisco Aironet**, and select **Aironet Client Utility (ACU)**.

ii) From the **Start** menu, select **Settings**, then **Control Panel**, and double click the **Aironet Client Utility** icon.

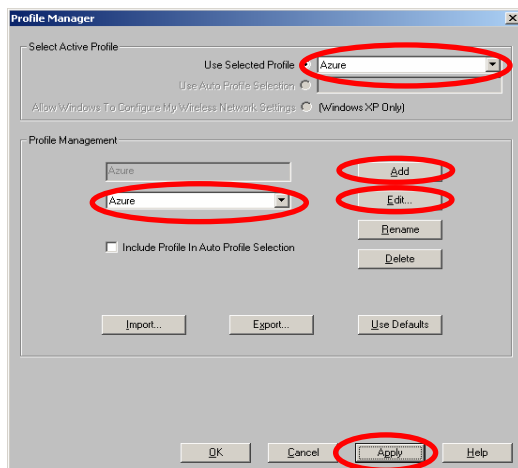
The window below will open.



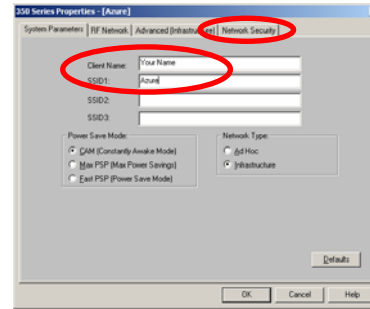
3. Set up an Azure Profile (or select the pre-existing Azure profile) to join the Azure network

• Click the **Profile Manager** icon, the window below will appear. If you already have an **Azure** profile created, select it from the **Use Selected Profile** drop down menu.

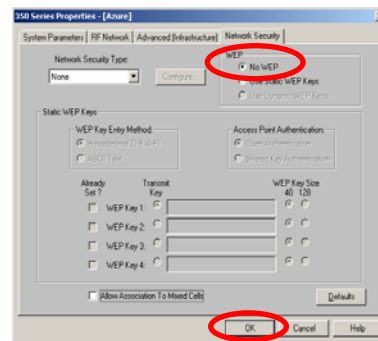
• Otherwise click the **Add** button to create a new profile. Type **Azure** in **Profile Management** box and click **Apply**.



• Next click the **Edit** button to configure the profile and the window shown at the top of the next column will appear. Type in **Azure** as the **SSID1** and any name of your choice for the **Client Name**.

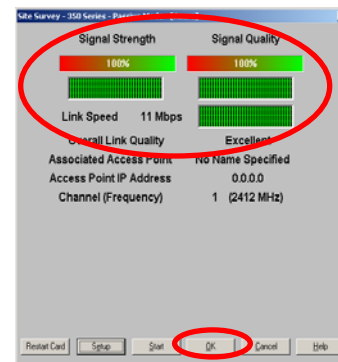


• Click the **Network Security** tab, and ensure the **No WEP** option is selected. Click **OK** to finish the process.



4. Confirm connection and signal strength

• On the **Aironet Client Utility** menu, click the **Site Survey** icon to see the signal strength. If this does not indicate a connection, repeat the login steps. Click **OK**, to proceed



5. Open your Web browser

Open any valid web page, and within a few seconds the Azure network will send you a login screen. Follow the onscreen login process to select your preferred billing option (through your ISP, via credit card, or by using a pre-paid card) and complete the login process.

6. Once you have finished the login process, you can **browse the Internet, use your email, or launch a Virtual Private Network** (or other secure encrypted connection) to your corporate network. **To logoff**, disconnect any VPNs and then click the Logout button.

For further technical assistance, call your Internet Service Provider (ISP) if they are an Azure Partner, or call Azure Wireless Technical Support on 1300 55 22 15

* These cards are the standard wireless cards used in most home/office wireless LAN's. Wireless cards can be purchased from any computer retailer/vendor.