

**** Windows XP – Intel® Centrino™ using PROset ****

Centrino™ users

You may need to turn on your inbuilt wireless LAN card, especially if you have not used it before. This is typically done using a switch located on the side or bottom of your laptop, or you may need to try a softkey combination. Consult your laptop manual for details.

1. Ensure your computer is using Intel® PROset

Check for the PROset icon in the system tray (as shown.) If this icon is not there, then you may not be using PROset – see the generic Windows XP instructions instead.

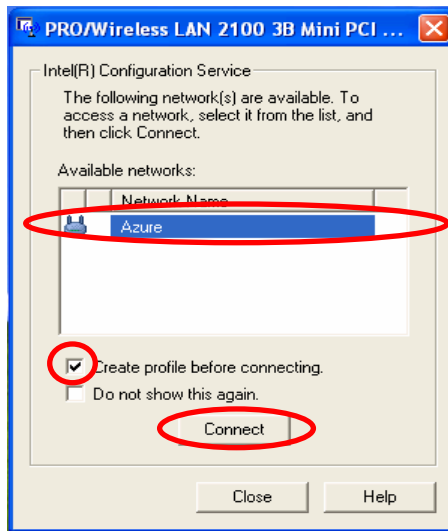


2. Connect to the detected Azure network

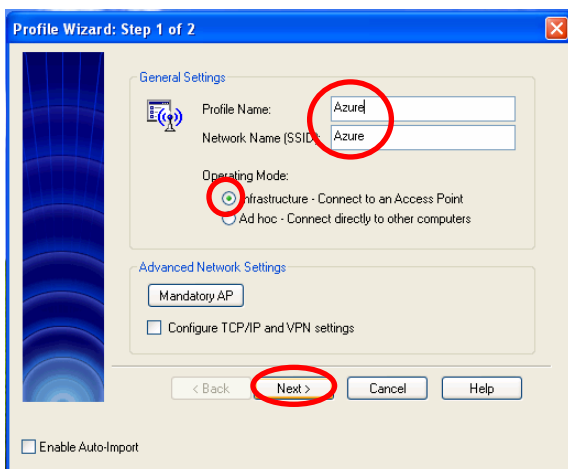
The Azure network should be automatically detected and a pop-up window should appear. If you have previously created an Azure profile, select the Azure profile and click **Connect**, and go to **step 6**.

3. Create an Azure profile

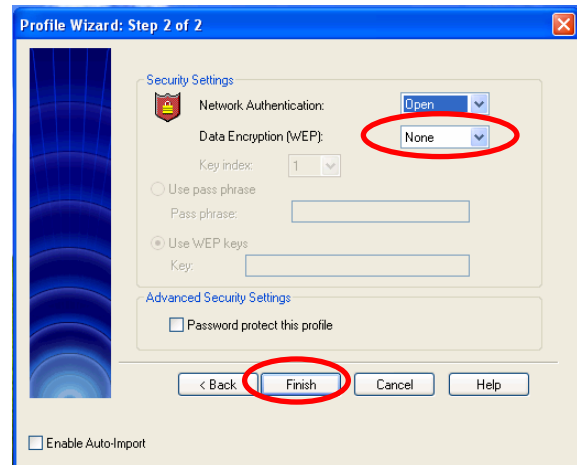
If an Azure profile does not exist, then create it by clicking the **Azure** network name, ensuring **Create profile before connecting** is ticked, and then click **Connect**.



4. In the first wizard step, type in **Azure** for both the **Profile Name** and the **Network Name**. Ensure **Infrastructure** mode is selected, and then click **Next**.

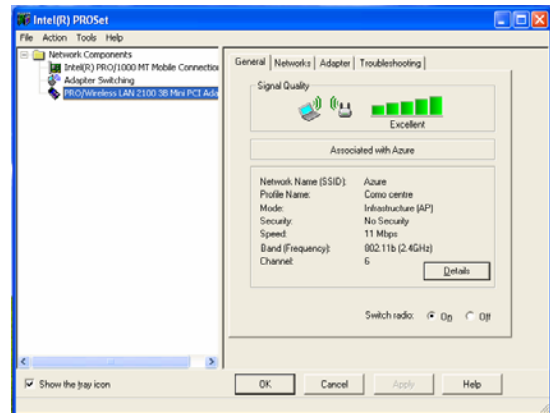


5. In the second wizard step, ensure **Data Encryption (WEP)** is **None**, and then click **Finish**.



6. Check signal strength

Click on the Intel® PROset icon in the system tray (see first picture) to display the current window. Check that the signal strength is adequate, and then press **OK**.



7. Open your web browser

Open any valid web page, and within a few seconds the Azure network will send you a login screen. Follow the onscreen login process to select your preferred billing option (through your ISP, via credit card, or by using a pre-paid card) and complete the login process.

8. Once you have finished the login process, you can **browse the Internet, use your email, or launch a Virtual Private Network** (or other secure encrypted connection) to your corporate network. **To logoff**, disconnect any VPNs and then click the Logout button.

For further technical assistance, call your Internet Service Provider (ISP) if they are an Azure Partner, or call Azure Wireless Technical Support on 1300 55 22 15