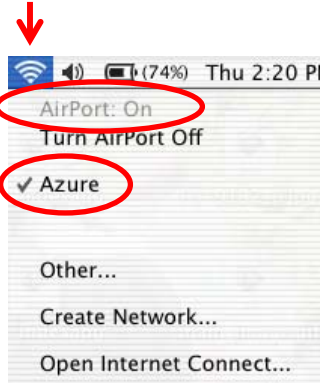


** Mac OS with AirPort inbuilt WiFi **

1. Ensure your AirPort is turned on

Click the AirPort icon on the top right corner of your screen, and ensure AirPort is on (as shown).



2. Detects Azure network

Your Mac should auto detect Azure's network. If there are more than one network, select **Azure**.

3. Open your web browser

Open any valid web page, and within a few seconds the Azure network will send you a login screen. Follow the onscreen login process to select your preferred billing option (through your ISP, via credit card, or by using a pre-paid card) and complete the login process.

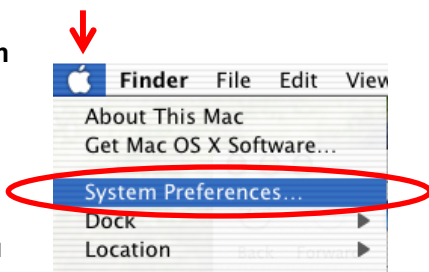
4. Once you have finished the login process, you can **browse the Internet, use your email, or launch a Virtual Private Network** (or other secure encrypted connection) to your corporate network. **To logoff**, disconnect any VPNs and then click the Logout button.

If you have problems ...

If the above procedure does not work, check your Network preferences as follows:

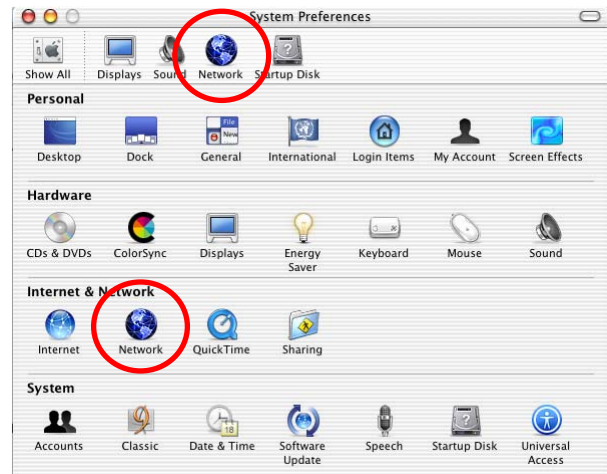
(a) Select System Preferences

Click on the Apple icon in the top left corner and choose the **Systems Preferences** menu item.



(b) Select Network Preferences

Double click the **Network** icon.



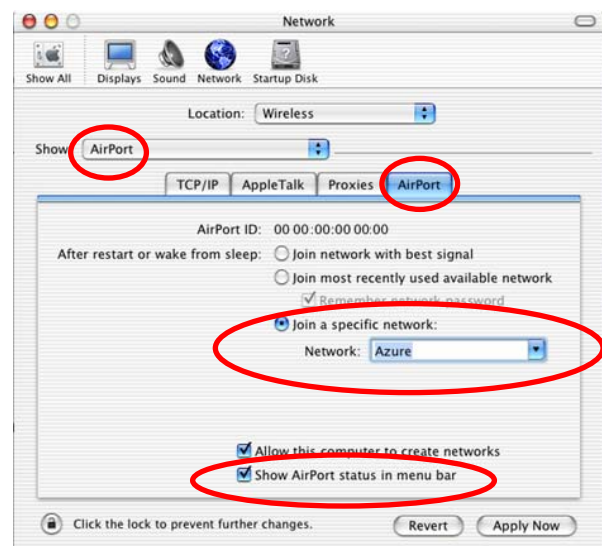
(c) Change your AirPort settings

Ensure that "Show" says "AirPort"

Select the **AirPort** tab.

Select to join the Azure network from the drop-down list. (If Azure is not in the list, then you are not in range of an Azure hotspot.)

Ensure "Show AirPort status in menu bar" is checked. Click **Apply Now**.



For further technical assistance, call your Internet Service Provider (ISP) if they are an Azure Partner, or call Azure Wireless Technical Support on 1300 55 22 15