

** 3Com AirConnect Wireless Card **

1. Insert the wireless 802.11b card* into your laptop, install the software provided by the manufacturer (if this is your first time using the card). **If you are using a built-in wireless card,** make sure the software is already installed by referring to your user manual to verify the card functions as required.

2. Launch the 3Com AirConnect Wireless Card Utility

There are several ways to do this, e.g.:

i) Double click the **3Com Launcher Utility** icon in the **System Tray**.



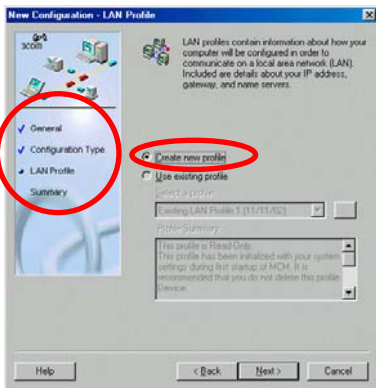
ii) From the **Start** menu, select **Programs**, then select **3Com AirConnect**, and select **3Com Launcher**.

The following window will open.



3. Set up an Azure Profile (or select the pre-existing Azure profile) to join the Azure network

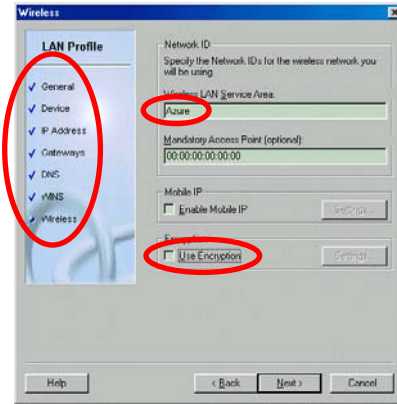
- Click the top second left icon **Mobile Connection Manager** in **3Com Launcher** as the above window shows.
- If an **Azure Configuration** icon exists, double click to activate it then restart your computer and proceed to step 4 OR
- To create a new configuration, double click the **New Configuration** icon. Follow the configuration wizard and fill in the required information, as follows:
 - In **General** section, type **Azure** as Configuration Name
 - In **Configuration Type** section, tick **Local area network**
 - In **LAN Profile** section, choose **Create new profile**



For each subsection in **LAN Profile** section, do as follows:

- In **General**, type **Azure** as **LAN Profile Name**.
- In **Device**, choose **3Com AirConnect Wireless Card**.
- In **IP Address**, choose **obtain an IP address automatically, using DHCP**.

- In **Gateways**, leave **Gateways** box empty.
- In **DNS**, **DO NOT** tick **enable DNS**.
- In **WINS**, choose **Disable NetBIOS over TCP/IP**.
- In **Wireless**, type **Azure** as **Wireless LAN Service Area**, and **DO NOT** tick **Use Encryption**.



- In **Summary** section, choose **Activate Now**. Click **Finish** and you will be prompted to restart your computer.

4. Confirm wireless connection and signal strength

After the successful configuration and the restart of your computer, click the **3Com Launcher** icon in the **System Tray** again and the utility windows will look as below. The stacked bars show the **Link Quality** and the red dashed line shows the connection between your computer and the access point is established.



5. Open your web browser

Open any valid web page, and within a few seconds the Azure network will send you a login screen. Follow the onscreen login process to select your preferred billing option (through your ISP, via credit card, or by using a pre-paid card) and complete the login process.

6. Once you have finished the login process, you can browse the Internet, use your email, or launch a Virtual Private Network (or other secure encrypted connection) to your corporate network. **To logoff**, disconnect any VPNs and then click the Logout button.

For further technical assistance, call your Internet Service Provider (ISP) if they are an Azure Partner, or call Azure Wireless Technical Support on 1300 55 22 15

* These cards are the standard wireless cards used in most home/office wireless LAN's. Wireless cards can be purchased from any computer retailer/vendor.